

MICROPILE CASING

MILL SECONDARY“STRUCTURAL GRADE” PIPE

SECTIONAL LENGTHS

threaded or welded couplers to extend to depths as required

N-80 (80 ksi) GRADE STEEL

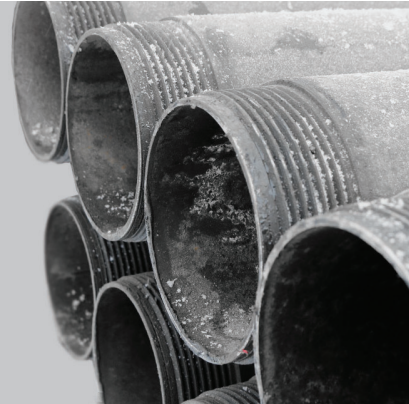
high strength threaded joints

SACRIFICIAL

Can be left in place

RETRIEVABLE

removed after grouting



Threads vary based on manufacturer

Common casing sizes

Outside Diameter	Wall Thickness	Inside Diameter
140mm (5.5")	9.2mm (0.361")	121.4mm (4.8")
	10.5mm (0.415")	118.6mm (4.7")
178mm (7")	10.4mm (0.408")	157.1mm (6.2")
	11.5mm (0.453")	154.8mm (6.1")
194mm (7-5/8")	10.9mm (0.430")	171.8mm (6.8")
	12.7mm (0.500")	168.3mm (6.6")
244mm (9-5/8")	12.0mm (0.472")	220.5mm (8.7")
	13.8mm (0.545")	216.8mm (8.5")

- Typical sacrificial casing sizes are based on what is readily available and most economical
- Drill bit size must fit inside casing, so rock bonded piles have smaller bond diameter
- Casing size must accommodate not only threadbar diameter but also centralizers and bar couplers and allow clearance for tremie tube
- Other casing sizes are available if required
- Retrievable casing is often higher grade steel with coarser thread to allow repeated use but substantially more expensive to purchase