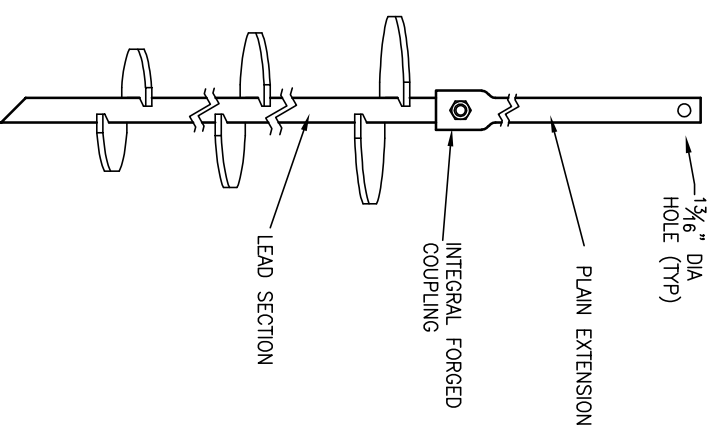
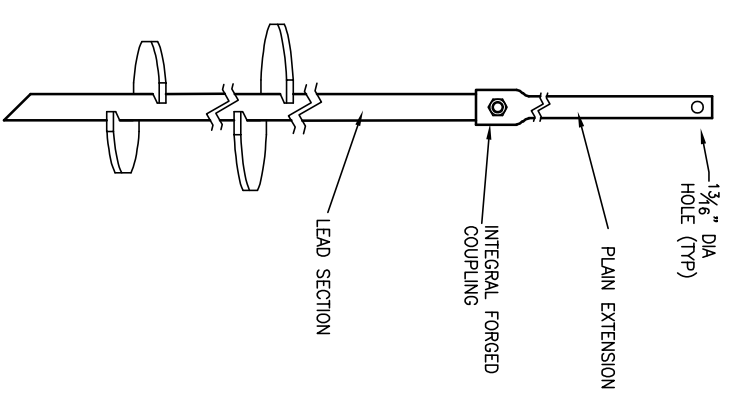
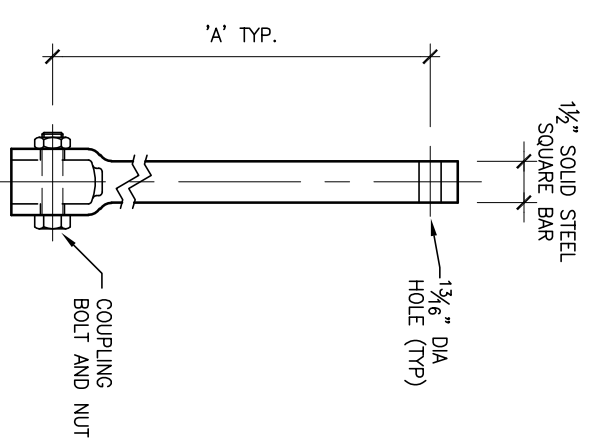
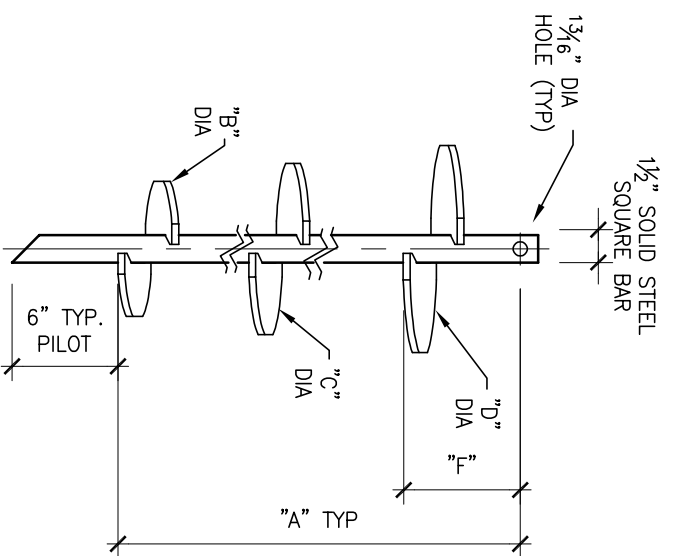
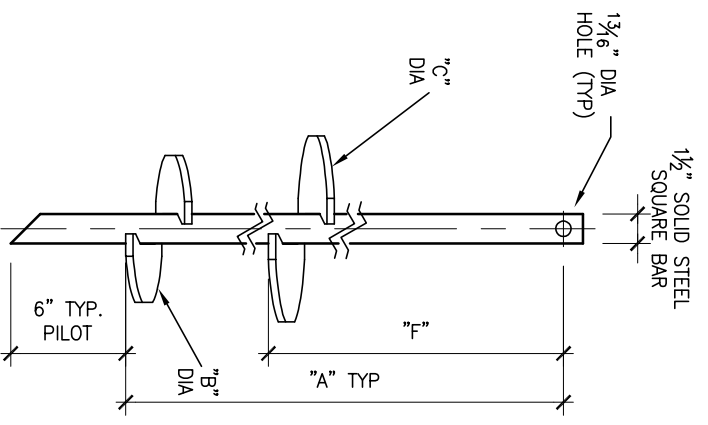


HELIX MUST BE FORMED BY MATCHING METAL DIE
(SIDE VIEW OF TRUE HELICAL FORM)



SS5 HELICAL PILES

DISCLAIMER

- The information and sketches contained in these drawings are given as guidelines only.
- Capacities of Chance® Helical Piles may vary depending on, but not limited to, water table elevation and changes to that elevation, changing soil conditions, soil layer thicknesses.
- Achievable capacities could be higher or lower than ratings due to site-specific conditions. On-site load testing should be performed to confirm additional pile capacities.
- Installed capacities to be verified by a registered Professional Engineer experienced in Chance® helical pile installation.
- The information contained herein is to be used for preliminary design activities only, and subject to EBS Website Disclaimer.

NOTES:

- HOT DIP GALVANIZED PER ASTM A153-(LATEST REV.).
- LEAD AND EXTENSION SECTION AND PILOT POINT LENGTHS ARE NOMINAL.
- SHAFT MATERIAL-HOT ROLLED ROUND-CORNERED SQUARE (RCS) SOLID STEEL BARS PER ASTM A29. MINIMUM YIELD STRENGTH=70 KSI.
- HELIX MATERIAL-HOT ROLLED LOW CARBON STEEL SHEET, STRIP, OR PLATE PER ASTM A572, OR A1018, OR A656; MINIMUM YIELD STRENGTH=50 KSI; 3/8" THICK.
- COUPLING BOLTS- 3/4" DIAMETER X 3" LONG HEX HEAD PER ASTM A325 TYPE 1.
- NOMINAL SPACING BETWEEN HELICAL PLATES IS THREE TIMES THE DIAMETER OF THE LOWER HELIX.
- MANUFACTURER TO HAVE IN EFFECT INDUSTRY RECOGNIZED WRITTEN QUALITY CONTROL FOR ALL MATERIALS AND MANUFACTURING PROCESSES.
- ALL WELDING TO BE DONE BY WELDERS CERTIFIED UNDER SECTION 5 OF THE AWS CODE D1.1.
- SEE ICC EVALUATION SERVICE INC., EVALUATION REPORT NO. ESR-2794 FOR ALLOWABLE VALUES AND/OR CONDITIONS OF USE CONCERNING MATERIAL PRESENTED IN THIS DRAWING.
- ALL HELICES HAVE A SHARPENED LEADING EDGE.
- TORQUE STRENGTH RATING=5,700 FT-LB.
- ULTIMATE CAPACITY (TENSION/COMPRESSION)=57 KIP, BASED ON A TORQUE FACTOR (K)_t=10.
- SINGLE HELIX ULTIMATE STRENGTH=40 KIP.
- ULTIMATE TENSION STRENGTH (COUPLING BOLT)=70 KIP.

LEAD SECTION
SCALE: N.T.S.

PLAIN EXTENSION
SCALE: N.T.S.

TYPICAL PILE ASSEMBLY
SCALE: N.T.S.

LEAD SECTION					
"A"	"B"	"C"	"D"	"F"	
7 5/8"	6"	8"		58 1/4"	
7 5/8"	8"	10"		52 1/2"	
7 5/8"	8"	10"		22 1/2"	
7 5/8"	10"	12"		10 1/4"	

EXTENSION	
"A"	
57 1/2"	
80 1/2"	
120"	

EBS is an authorized distributor of A.B. Chance Civil Construction products.

Registered Trademark of A.B. Chance, a division of Hubbell Power Systems, Inc.

320 Woodwich Street South, Breslau, Ontario N0B 1M0
Tel: 519-648-3613 Fax: 519-648-2526
Email: info@ebsgeo.com

PROJECT: SAMPLE

DRAWING: SS5 HELICAL PILES

DRW'N BY:	SCALE:	N.T.S.
CHECKED:	DATE:	NOVEMBER 2021
PROJECT No.:	DWG. No.:	