

HELIX MUST BE FORMED BY MATCHING METAL DIE  
(SIDE VIEW OF TRUE HELICAL FORM)

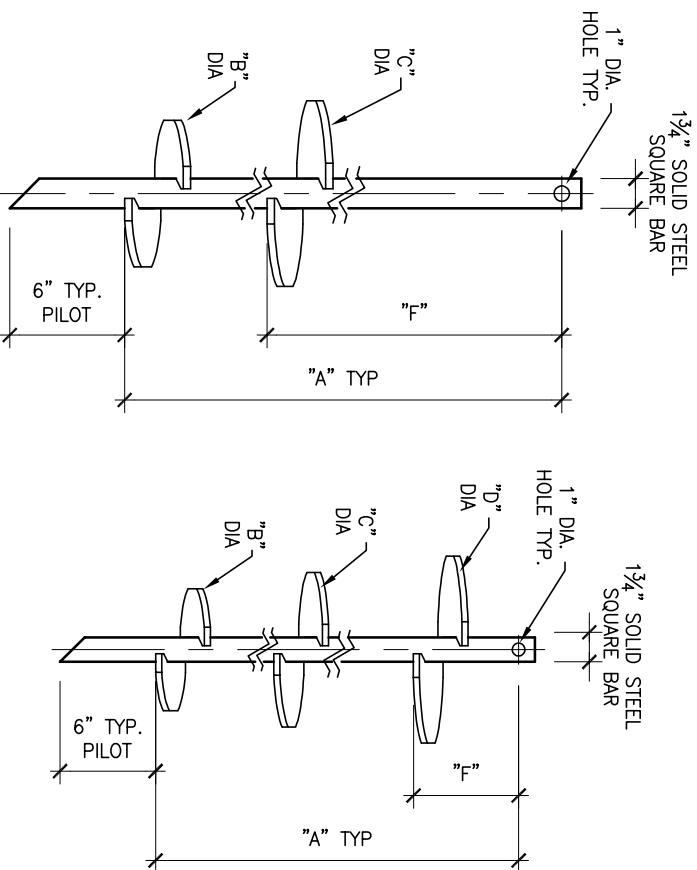
## SS175 HELICAL PILES

### DISCLAIMER

- The information and sketches contained in these drawings are given as guidelines only.
- Capacities of Chance® Helical Piles may vary depending on, but not limited to, water table elevation and changes to that elevation, changing soil conditions, soil layer thicknesses.
- Achievable capacities could be higher or lower than ratings due to site-specific conditions. On-site load testing should be performed to confirm additional pile capacities.
- Installed capacities to be verified by a registered Professional Engineer experienced in Chance® helical pile installation.
- The information contained herein is to be used for preliminary design activities only, and subject to EBS' Website Disclaimer.

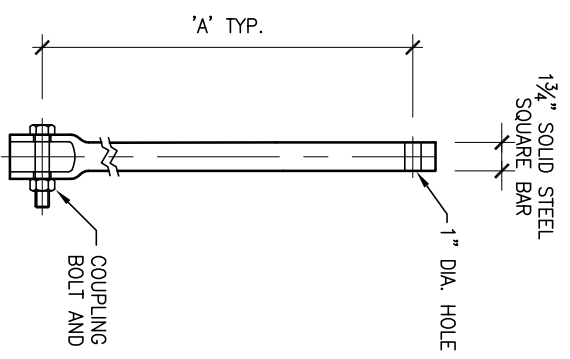
### NOTES:

- HOT DIP GALVANIZED PER ASTM A153-(LATEST REV.).
- LEAD AND EXTENSION SECTION LENGTHS AND HELIX SPACINGS ARE NOMINAL.
- NOMINAL SPACING BETWEEN HELIX PLATES IS THREE TIMES THE DIAMETER OF THE LOWER HELIX.
- SHAFT MATERIAL-HOT ROLLED ROUND-CORNERED SQUARE (RCS) SOLID STEEL BARS PER ASTM A29; MINIMUM YIELD STRENGTH=90 KSI.
- HELIX MATERIAL-HOT ROLLED LOW CARBON STEEL SHEET, STRIP, OR PLATE PER ASTM A572, OR A1018, OR A656; MINIMUM YIELD STRENGTH=80 KSI; 3/8" THICK.
- COUPLING BOLTS: 1/2" DIAMETER X 3-1/2" LONG HEX HEAD PER ASTM A193 GRADE B7.
- MANUFACTURER TO HAVE IN EFFECT INDUSTRY RECOGNIZED WRITTEN QUALITY CONTROL FOR ALL MATERIALS AND MANUFACTURING PROCESSES.
- ALL WELDING TO BE DONE BY WELDERS CERTIFIED UNDER SECTION 5 OF THE AWS CODE D1.1.
- SEE ICC EVALUATION SERVICE INC., EVALUATION REPORT NO. ESR-2794 FOR ALLOWABLE VALUES AND/OR CONDITIONS OF USE CONCERNING MATERIAL PRESENTED IN THIS DRAWING.
- ALL HELICES HAVE A SHARPENED LEADING EDGE.
- TORQUE STRENGTH RATING-10,500 FT-LB.
- ULTIMATE CAPACITY (COMPRESSION)-105 KIP, BASED ON A TORQUE FACTOR (K9)=10.
- SINGLE HELIX ULTIMATE STRENGTH-50 KIP.
- ULTIMATE TENSION STRENGTH (COUPLING BOLT)-100 KIP.



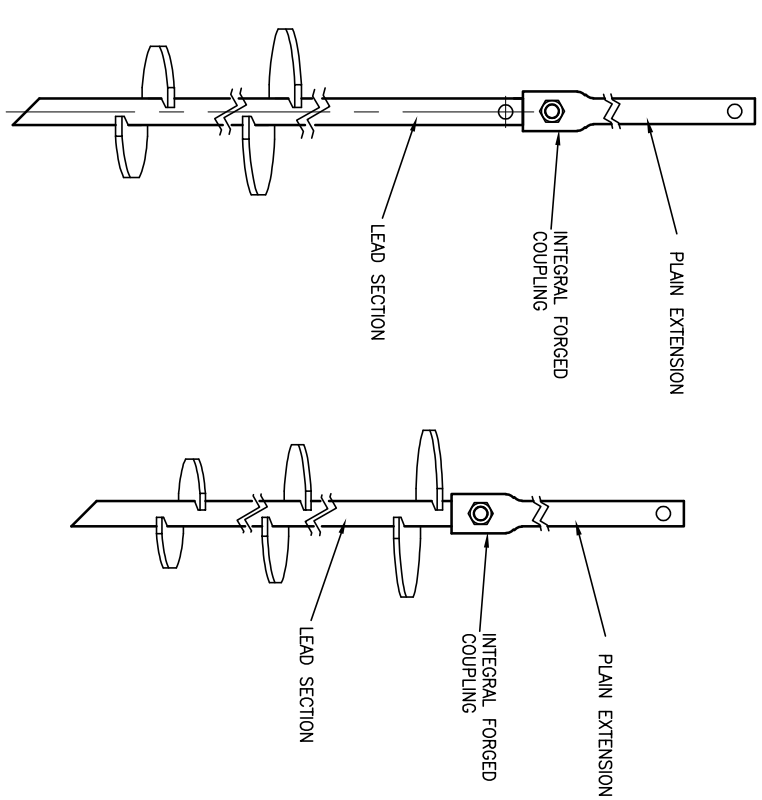
### LEAD SECTION

SCALE: N.T.S.



### PLAIN EXTENSION

SCALE: N.T.S.



### TYPICAL PILE ASSEMBLY

SCALE: N.T.S.

LEAD SECTION					
"A"	"B"	"C"	"D"	"F"	
29 3/4"	6"	8"		1 1/4"	
76 1/4"	8"	10"		53"	
76 1/4"	8"	10"		23"	
76 1/4"	10"	12"	14"	10 1/4"	

EXTENSION	
"A"	
58 1/4"	
79 3/4"	
123"	

**EBS**  
GEOSTEEL

320 Woolwich Street South, Breslau, Ontario N0B 1M0  
Tel: 519-648-3613 Fax: 519-648-2526  
Email: info@ebsgeo.com

PROJECT: SAMPLE

**CHANCE**  
Since 1912

EBS is an authorized distributor of A.B. Chance Civil Construction products, a division of Hubbell Power Systems, Inc.

DRAWING: SS175 HELICAL PILES	
DRW'N BY:	SCALE: N.T.S.
CHECKED:	DATE: NOVEMBER 2021
PROJECT No.:	DWG. No.: