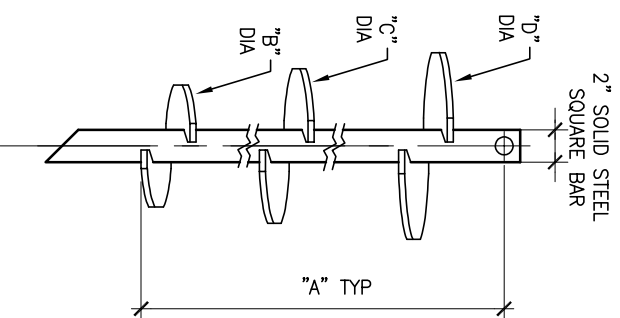


HELIX MUST BE FORMED BY MATCHING METAL DIE
(SIDE VIEW OF TRUE HELICAL FORM)

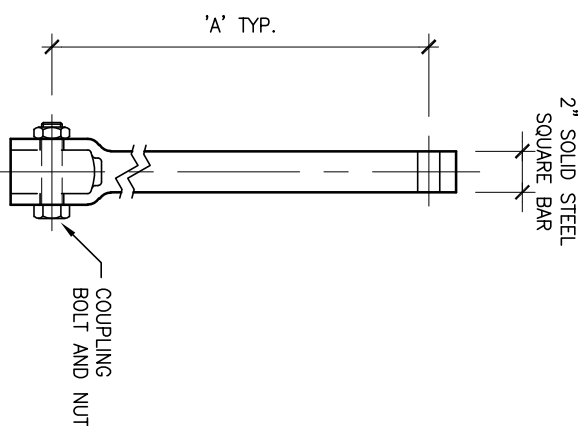


LEAD SECTION

SCALE: N.T.S.

LEAD SECTION			
"A"	"B"	"C"	"D"
59 3/4"	6"	8"	10"
59 1/4"	8"	10"	12"
80"	10"	12"	14"

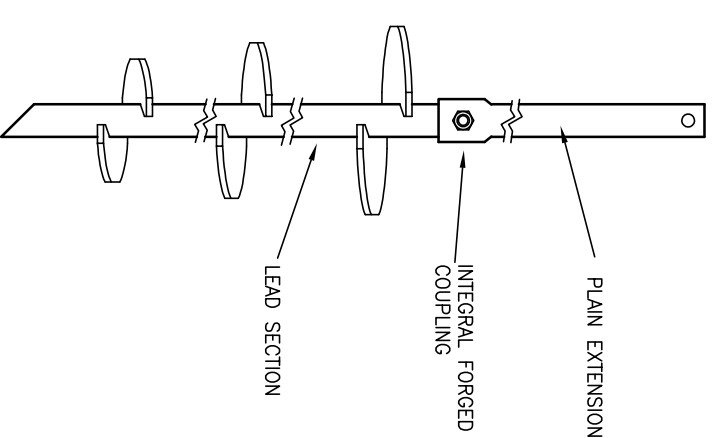
SS200 HELICAL PILES



PLAIN EXTENSION

SCALE: N.T.S.

EXTENSION	
"A"	
58 3/4"	
80 1/4"	
123 1/4"	



TYPICAL PILE ASSEMBLY

SCALE: N.T.S.

- DISCLAIMER**
- The information and sketches contained in these drawings are given as guidelines only.
 - Capacities of Chance® Helical Piles may vary depending on, but not limited to, water table elevation and changes to that elevation, changing soil conditions, soil layer thicknesses.
 - Achievable capacities could be higher or lower than ratings due to site-specific conditions. On-site load testing should be performed to confirm additional pile capacities.
 - Installed capacities to be verified by a registered Professional Engineer experienced in Chance® helical pile installation.
 - The information contained herein is to be used for preliminary design activities only, and subject to EBS' Website Disclaimer.

- NOTES:**
- HOT DIP GALVANIZED PER ASTM A153-(LATEST REV.),
 - LEAD AND EXTENSION SECTION LENGTHS AND HELIX SPACINGS ARE NOMINAL.
 - NOMINAL SPACING BETWEEN HELIX PLATES IS THREE TIMES THE DIAMETER OF THE LOWER HELIX.
 - SHAFT MATERIAL-HOT ROLLED ROUND-CORNERED SQUARE (RCS) SOLID STEEL BARS PER ASTM A29; MINIMUM YIELD STRENGTH=90 KSI.
 - HELIX MATERIAL-HOT ROLLED LOW CARBON STEEL SHEET, STRIP, OR PLATE PER ASTM A572, OR A1018, OR A656; MINIMUM YIELD STRENGTH=80 KSI; 1/2" THICK.
 - COUPLING BOLTS: 1-1/8" DIAMETER X 4-1/2" LONG HEX HEAD PER ASTM A193 GRADE B7.
 - MANUFACTURER TO HAVE IN EFFECT INDUSTRY RECOGNIZED WRITTEN QUALITY CONTROL FOR ALL MATERIALS AND MANUFACTURING PROCESSES.
 - ALL WELDING TO BE DONE BY WELDERS CERTIFIED UNDER SECTION 5 OF THE AWS CODE D1.1.
 - TORQUE STRENGTH RATING - 16000 FT-LBS.
 - ULTIMATE CAPACITY (TENSION/COMPRESSION) - 150kips.

NO.	DATE	REVISION

EBS
GEOSTEEL

320 Woolwich Street South, Breslau, Ontario N0B 1M0
Tel: 519-648-3613 Fax: 519-648-2526
Email: info@ebsgeo.com

COR **IHSAA**
CORROSION RESISTANT
IHSAA A193

EBIS is an authorized distributor of A.B. Chance Civil Construction products.

Since 1912

Registered Trademark of A.B. Chance, a division of Hubbell Power Systems, Inc.

PROJECT: SAMPLE

DRAWING: SS200 HELICAL PILES

DRW'N BY: SCALE: N.T.S.

CHECKED: DATE: NOVEMBER 2021

PROJECT No.: DWG. No.: