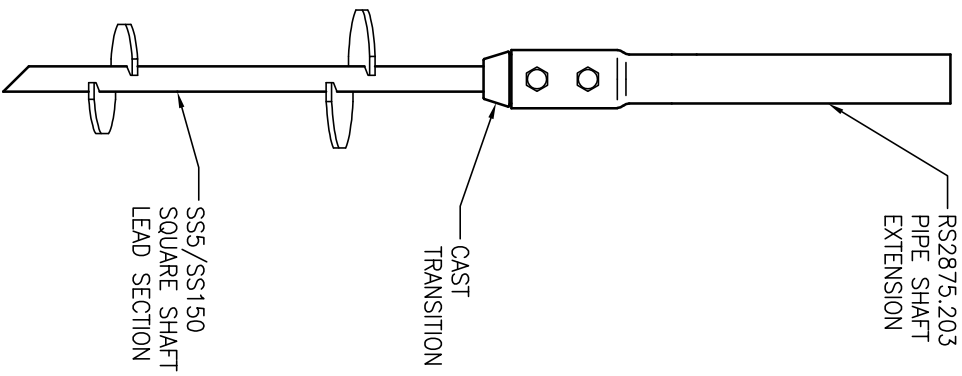
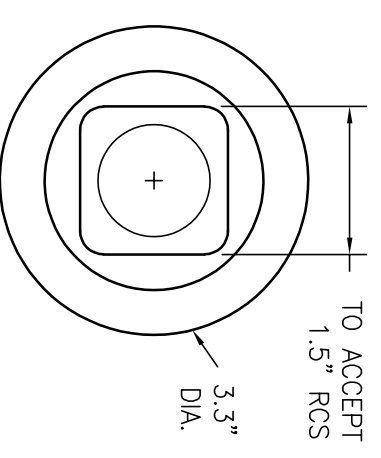
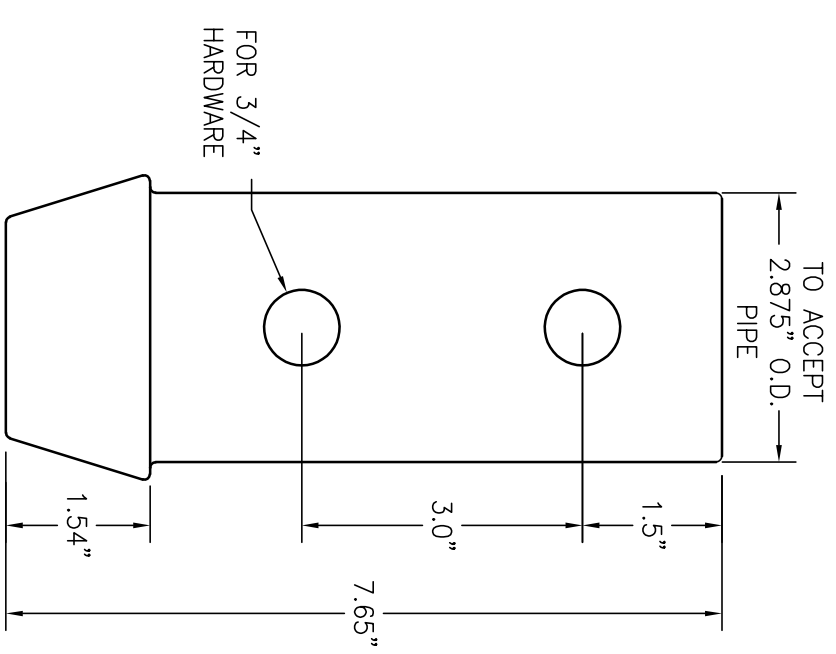


**SS5/SS150 TO RS2875.203  
TRANSITIONS**



**TYPICAL COMBO PILE  
ASSEMBLY**

SCALE: N.T.S.



**DISCLAIMER**

- The information and sketches contained in these drawings are given as guidelines only.
- Capacities of Chance® Helical Piles may vary depending on, but not limited to, water table elevation and changes to that elevation, changing soil conditions, soil layer thicknesses. Achievable capacities could be higher or lower than ratings due to site-specific conditions. On-site load testing should be performed to confirm additional pile capacities.
- Installed capacities to be verified by a registered Professional Engineer experienced in Chance® helical pile installation.
- The information contained herein is to be used for preliminary design activities only, and subject to EBS' Website Disclaimer.

**NOTES**

- MATERIAL: CAST DUCTILE IRON PER ASTM A536 65-45-12.
- FINISH: HOT DIP GALVANIZED PER ASTM A153.
- HARDWARE: USE HARDWARE INCLUDED IN STANDARD PIPE SHAFT EXTENSION.
- RATINGS:
  - TORQUE: 7,000 FT-LBS
  - COMPRESSION: 72 KIPS
  - TENSION: 62 KIPS.

320 Woolwich Street South, Breslau, Ontario N0B 1M0  
Tel: 519-648-3613 Fax: 519-648-2526  
Email: info@ebsgeo.com

PROJECT: **SAMPLE**

DRAWING: **SQUARE TO ROUND SHAFT TRANSITIONS  
SS5/SS150 TO RS2875.203**

DRW'N BY:	SCALE:	N.T.S.
CHECKED:	DATE:	NOVEMBER 2021
PROJECT No.:	DWG. No.:	

EBS is an authorized distributor of A.B. Chance Civil Construction products.

Registered trademark of A.B. Chance, a division of Hubbell Power Systems, Inc.