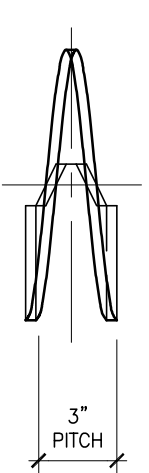


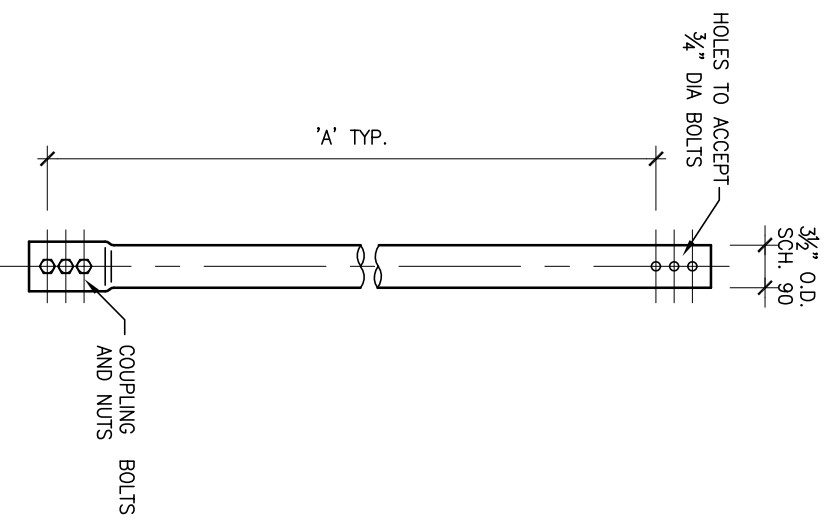
LEAD SECTION

SCALE: N.T.S.



HELIX MUST BE FORMED BY MATCHING METAL DIE
(SIDE VIEW OF TRUE HELICAL FORM)

RS3500 HELICAL PILES



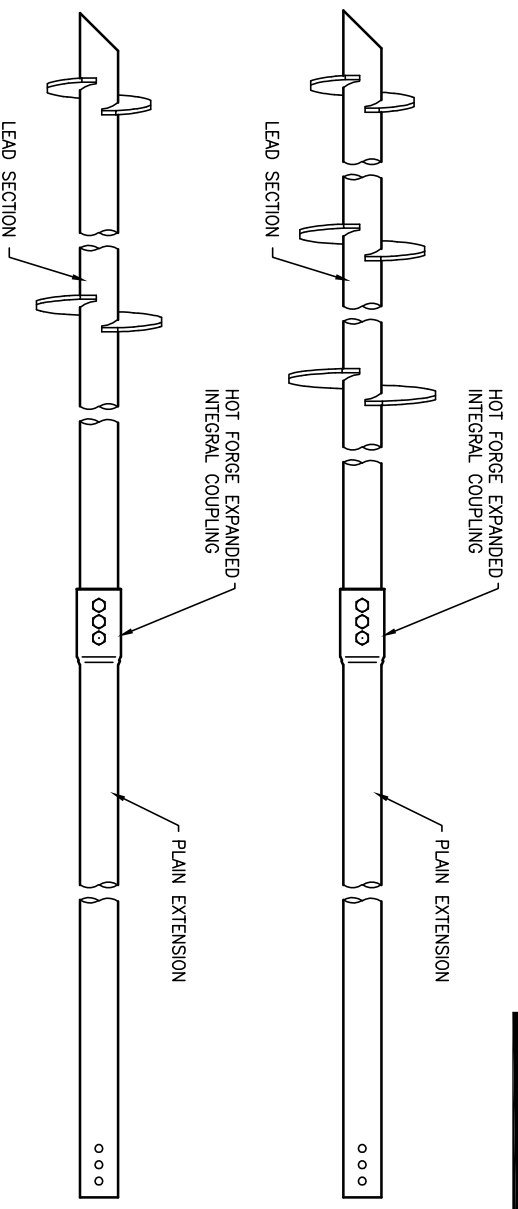
PLAIN EXTENSION

SCALE: N.T.S.

DISCLAIMER
 1. The information and sketches contained in these drawings are given as guidelines only.
 2. Capacities of Chance® Helical Piles may vary depending on, but not limited to, water table elevation and changes to that elevation, changing soil conditions, soil layer thicknesses.
 3. Achievable capacities could be higher or lower than ratings due to site-specific conditions. On-site load testing should be performed to confirm additional pile capacities.
 4. Installed capacities to be verified by a registered Professional Engineer experienced in Chance® helical pile installation.
 5. The information contained herein is to be used for preliminary design activities only, and subject to EBS' Website Disclaimer.

EXTENSION	
"A"	
56"	
78"	
119"	

LEAD SECTION					
"A"	"B"	"C"	"D"	"F"	
75"	10"	12"		45"	
79"	8"	10"	12"	25"	



TYPICAL ANCHOR ASSEMBLY

SCALE: N.T.S.

- NOTES:**
- HOT DIP GALVANIZED PER ASTM A153-(LATEST REV.).
 - LEAD AND EXTENSION SECTION LENGTHS AND HELIX SPACINGS ARE NOMINAL.
 - NOMINAL SPACING BETWEEN HELIX PLATES IS THREE TIMES THE DIAMETER OF THE LOWER HELIX.
 - PIPE SHAFT MATERIAL: 2-1/2" NOMINAL, SCHEDULE 40 WALL THICKNESS PER ASTM A500 GRADE B.
 - HELIX MATERIAL: HOT ROLLED LOW CARBON STEEL SHEET, STRIP, OR PLATE PER ASTM A572, OR A1018, OR A686; MINIMUM YIELD STRENGTH-80 KSI; 1/2" THICK.
 - COUPLING BOLTS: 3/4" DIAMETER X 5-1/2" LONG HEX HEAD PER SAE J429 GRADE 5.
 - MANUFACTURER TO HAVE IN EFFECT INDUSTRY RECOGNIZED WRITTEN QUALITY CONTROL FOR ALL MATERIALS AND MANUFACTURING PROCESSES.
 - ALL WELDING TO BE DONE BY WELDERS CERTIFIED UNDER SECTION 5 OF THE AWS CODE D1.1.
 - EXTENSIONS MUST BE PROVIDED WITH A HOT FORGE EXPANDED INTEGRAL COUPLING CONNECTION ON ONE END.
 - REFER TO SA104-10044 DRAWING FOR A MORE COMPLETE LIST OF LEADS AND SA4150-10045 FOR PLAIN AND HELICAL EXTENSIONS
 - TORQUE STRENGTH RATING - 13,000FT-LBS.
 - ULTIMATE CAPACITY (TENSION/COMPRESSION) - 91kips, BASED ON A TORQUE FACTOR (K) = 7
 - SINGLE HELIX ULTIMATE STRENGTH - 50kips
 - ULTIMATE TENSION STRENGTH (COUPLING BOL.T) - 120kips

NO.	DATE	REVISION

320 Woolwich Street South, Breslau, Ontario N0B 1M0
 Tel: 519-648-3613 Fax: 519-648-2526
 Email: info@ebsgeo.com

PROJECT: **SAMPLE**

DRAWING: **RS3500 HELICAL PILES**

DRW'N BY:	SCALE:	N.T.S.
CHECKED:	DATE:	NOVEMBER 2021
PROJECT No.:	DWG. No.:	

EBS is an authorized distributor of A.B. Chance Civil Construction products.
 Registered trademark of A.B. Chance, a division of Hubbell Power Systems, Inc.