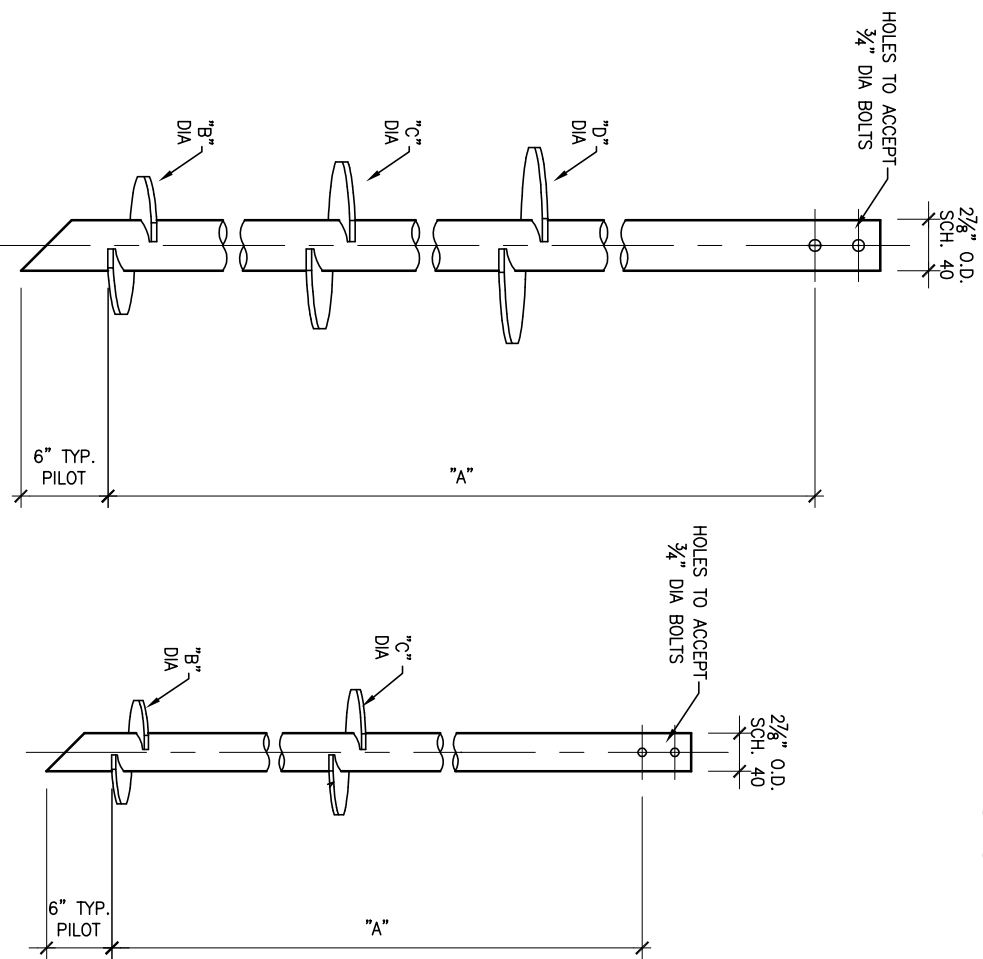
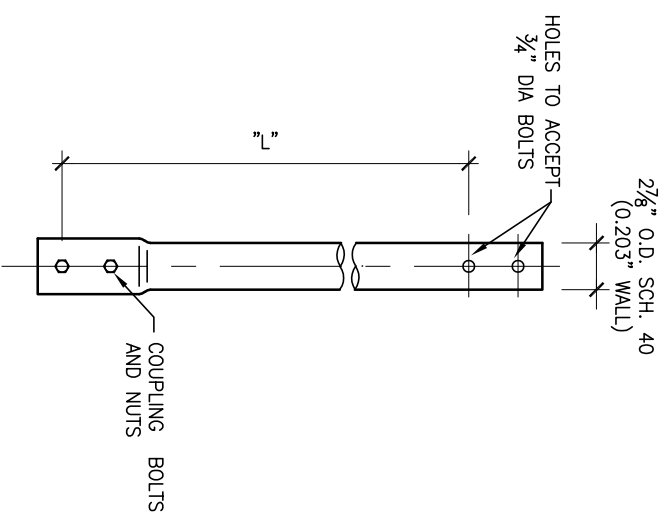


RS2875 HELICAL PILES



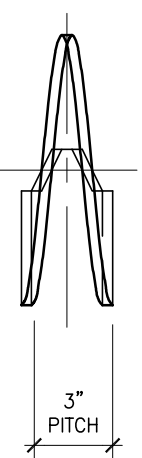
LEAD SECTION

SCALE: N.T.S.



PLAIN EXTENSION

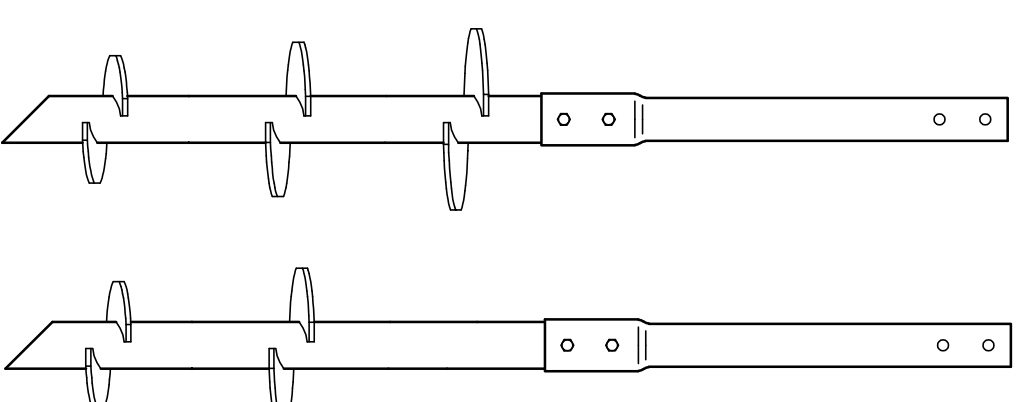
SCALE: N.T.S.



HELIX MUST BE FORMED BY MATCHING METAL DIE
(SIDE VIEW OF TRUE HELICAL FORM)

LEAD SECTION			
"A"	"B"	"C"	"D"
7 5/8"	10"	12"	14"
7 5/4"	10"	12"	
7 5/4"	10"	12"	

EXTENSION	
"L"	
3.5'	
5'	
7'	
10'	



TYPICAL PILE ASSEMBLY

SCALE: N.T.S.

- DISCLAIMER**
- The information and sketches contained in these drawings are given as guidelines only.
 - Capacities of Chance® Helical Piles may vary depending on, but not limited to, water table elevation and changes to that elevation, changing soil conditions, soil layer thicknesses.
 - Achievable capacities could be higher or lower than ratings due to site-specific conditions. On-site load testing should be performed to confirm additional pile capacities.
 - Installed capacities to be verified by a registered Professional Engineer experienced in Chance® helical pile installation.
 - The information contained herein is to be used for preliminary design activities only, and subject to EBS' Website Disclaimer.

- NOTES:**
- HOT DIP GALVANIZED PER ASTM A153-(LATEST REV.).
 - LEAD AND EXTENSION SECTION LENGTHS AND HELIX SPACINGS ARE NOMINAL.
 - NOMINAL SPACING BETWEEN HELIX PLATES IS THREE TIMES THE DIAMETER OF THE LOWER HELIX.
 - PIPE SHAFT MATERIAL- 2 1/2" NOMINAL, SCHEDULE 40 WALL THICKNESS PER ASTM A500 GRADE B.
 - HELIX MATERIAL-HOT ROLLED LOW CARBON STEEL SHEET, YIELD STRENGTH=80 KSI, 1/2" THICK.
 - COUPLING BOLTS: 3/4" DIAMETER X 4 1/2" LONG HEX HEAD PER SAE J429 GRADE 5.
 - MANUFACTURER TO HAVE IN EFFECT INDUSTRY RECOGNIZED WRITTEN QUALITY CONTROL FOR ALL MATERIALS AND MANUFACTURING PROCESSES.
 - ALL WELDING TO BE DONE BY WELDERS CERTIFIED UNDER SECTION 5 OF THE AWS CODE D1.1.
 - TORQUE STRENGTH RATING - 5,500 FT-LBS.
 - ULTIMATE CAPACITY (TENSION/COMPRESSION) - 49kips, BASED ON A TORQUE FACTOR (Kt) = 9

NO.	DATE	REVISION

EBS
GEOSTRUCTURAL

320 Woolwich Street South, Breslau, Ontario N0B 1M0
Tel: 519-648-3613 Fax: 519-648-2526
Email: info@ebsgeo.com

ICPI **IHSIA**
Member Since 1998

PROJECT: SAMPLE

DRAWING: RS2875 HELICAL PILES

DRW'N BY:	SCALE:	N.T.S.
CHECKED:	DATE:	NOVEMBER 2021
PROJECT No.:	DWG. No.:	

EBS is an authorized distributor of A.B. Chance Civil Construction products.

CHANGE
Since 1912

Registered trademark of A.B. Chance, a division of Hubbell Power Systems, Inc.